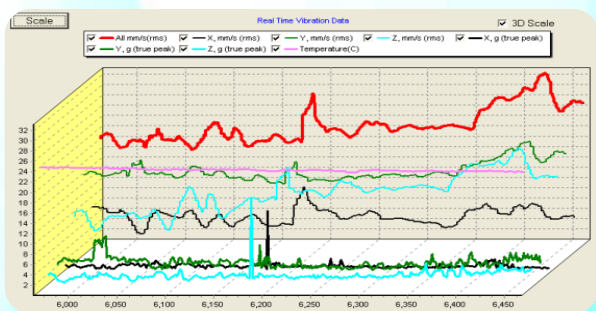


## On-Line Vibration Monitor & Recorder

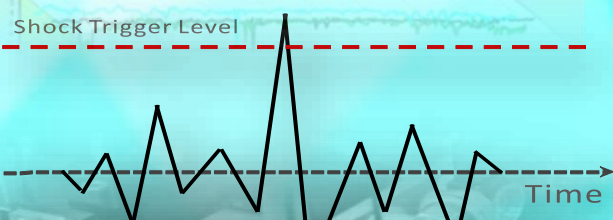
### Product Features:

- 三軸向加速規 Tri-axial
- 6,000 筆振動紀錄
- 可與 IPC系統即時連線
- 異常時有指示燈及記錄
- 具有警示聲音
- 可監測暫態與穩態振動
- 可輸出 Excel 報表
- 內建高速 DSP 處理器
- 即時觀測Robot振動趨勢
- 記錄與監測兩機一體



### Application Notes:

- 半導體設備維護
- LCD面板設備維護
- 機械手臂振動監測
- 氣壓缸振動監測
- 傳動馬達振動監測
- 皮帶鬆脫振動警報
- Pump振動監測
- 精密運輸振動紀錄
- 撞擊紀錄



**True Peak (Impact) Detection**

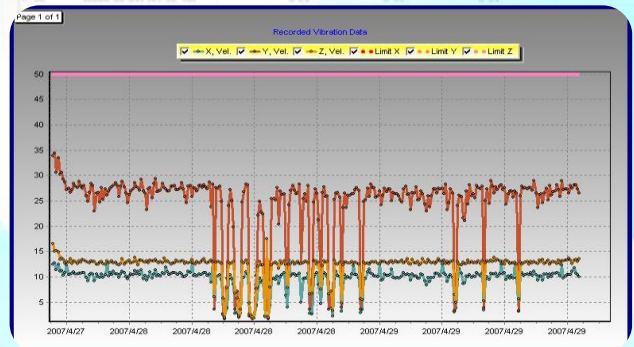
# Specifications:

<b>Measuring Range</b>	0.0 - 200.0 mm/s (True Peak)
<b>Dimensions</b>	60mm x 40mm x 30mm
<b>Weight</b>	< 60.0 gram
<b>Accelerometer Sensitivity</b>	100.0 mV/G
<b>Power requirement</b>	AC 95V - 240 V
<b>Power Consumption</b>	< 2.0 Watt.
<b>Alert LEDs</b>	Green, Yellow, Red
<b>Sensor Cable Length</b>	Up to 5 meters
<b>Alarm Configuration</b>	Programmable
<b>Frequency Range</b>	10Hz - 1KHz (ISO 2954)
<b>Data Interface</b>	RS-232 (38,400 bps)
<b>Memory Lifetime</b>	EEPROM (>100 years)
<b>Measurement Axis</b>	Three Axis
<b>Data Acquisition Rate</b>	30KHz(max.)
<b>Impact Trigger Level</b>	Programmable
<b>Vibration. DC Output</b>	DC 0V - 10V(20mA)
<b>Data Size</b>	6,000 records
<b>Operating Temperature</b>	5°C - 85 °C
<b>Memory Buffer</b>	Circle Buffer

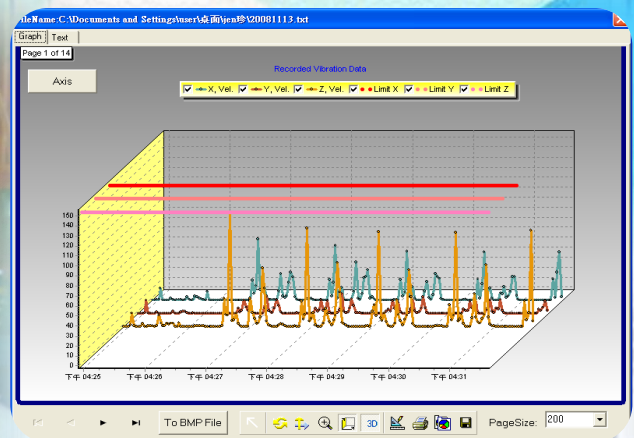
# List Report:

Index	Date & Time	X, mm/s (P-P)	Y, mm/s (P-P)	Z, mm/s (P-P)
# 0	[2008-08-01] [16:24:58]	0.23	0.12	0.27
# 1	[2008-08-01] [16:25:00]	0.23	0.12	0.31
# 2	[2008-08-01] [16:25:02]	0.55	0.12	0.31
# 3	[2008-08-01] [16:25:04]	0.90	0.55	1.44
# 4	[2008-08-01] [16:25:06]	12.04	13.32	13.44
# 5	[2008-08-01] [16:25:08]	0.27	0.16	0.55
# 6	[2008-08-01] [16:25:10]	0.27	0.12	0.27
# 7	[2008-08-01] [16:25:12]	0.27	0.12	0.35
# 8	[2008-08-01] [16:25:14]	0.23	0.19	0.27
# 9	[2008-08-01] [16:25:16]	2.06	1.13	2.61
# 10	[2008-08-01] [16:25:18]	0.47	0.16	0.39
# 11	[2008-08-01] [16:25:20]	0.35	0.12	0.27
# 12	[2008-08-01] [16:25:22]	0.86	0.23	0.51
# 13	[2008-08-01] [16:25:24]	0.90	0.16	0.47
# 14	[2008-08-01] [16:25:26]	0.47	0.16	0.51
# 15	[2008-08-01] [16:25:28]	0.35	0.12	0.35
# 16	[2008-08-01] [16:25:30]	0.90	0.43	0.78
# 17	[2008-08-01] [16:25:32]	3.19	1.91	11.30
# 18	[2008-08-01] [16:25:34]	0.78	0.43	3.62
# 19	[2008-08-01] [16:25:36]	0.27	0.19	0.51
# 20	[2008-08-01] [16:25:38]	1.01	0.16	0.58
# 21	[2008-08-01] [16:25:40]	4.17	1.67	3.62
# 22	[2008-08-01] [16:25:42]	3.12	2.22	2.26
# 23	[2008-08-01] [16:25:44]	1.99	1.99	3.70
# 24	[2008-08-01] [16:25:46]	1.56	0.82	3.70
# 25	[2008-08-01] [16:25:48]	0.51	0.16	0.31
# 26	[2008-08-01] [16:25:50]	0.31	0.12	0.31

# Historical chart:



# 3D trend chart:



**BALTech Co. Ltd.**

衡碁科技有限公司

No.122, Zhongzheng 2nd Rd., Hukou Township, Hsinchu County 303, Taiwan (R.O.C.)

[Http://www.baltech.com.tw](http://www.baltech.com.tw)

Tel: +886-3-590-8611 (representative)

Fax: +886-3-590-3983

